



**COPERCHI E ANELLI PER
 BANCO GELATERIA**

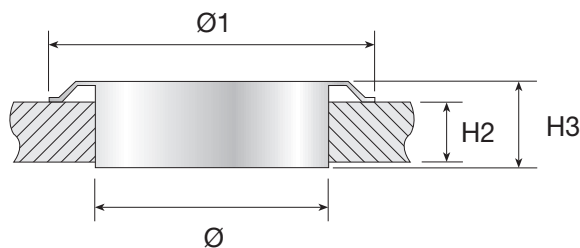
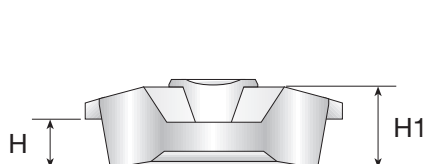
**LIDS AND RING FRAMES FOR
 ICE CREAM COUNTERS**

DECKEL UND RINGE FÜR EISTHEKEN

**COUVERCLES ET ANNEAUX POUR
 COMPTOIR GLACIER**

**TAPAS CON ANILLO PARA
 MEUBLES REFRIGERADOS DE HELADERÍA**

**TAMPOS E ANÉIS PARA BALCÕES
 DE SORVETERIA**



| Art. | Ø (mm) | Ø1 (mm) | H (mm) | H1 (mm) | H2 (mm) | H3 (mm) |
|-----------------|-----------|------------|-----------|------------|------------|------------|
| 1038 | 190 | 214 | 37 | 60 | 63 | 70 |
| 1039 | 200 | 224 | 37 | 60 | 63 | 70 |
| 1040 (*) | 210 | 234 | 37 | 60 | 63 | 70 (*) |
| 1041 (*) | 220 | 244 | 37 | 60 | 63 | 70 (*) |
| 1042 (*) | 230 | 254 | 37 | 60 | 63 | 70 (*) |
| 2001 | 250 | 274 | 37 | 60 | 63 | 70 |
| 2007 | 270 | 294 | 37 | 60 | 63 | 70 |
| 2010 | 290 | 314 | 37 | 60 | 63 | 70 |
| 2013 | 310 | 334 | 37 | 60 | 63 | 70 |

(*) A richiesta con anello H3 = 100
 with ring H3 = 100 upon request
 Auf Anfrage mit Ring H3 = 100
 Sur demande avec anneau H3 = 100
 A pedido con anillo H3 = 100
 A pedido com anel H3 = 100



COPERCHI QUADRI, CONVOGLIATORI E CONTROSORBETTIERE

Un funzionale raccordo con l'interno della cella frigorifera

SQUARE LIDS, CONVEYORS AND NESTS FOR ICE-CREAM CARAPINA

A functional connection with the inside of the cold store

VIERECKIGE DECKEL, GELEIT UND AUSSENGEFÄSSE FÜR SPEISEEISBEHÄLTER

Eine funktionelle Verbindung mit dem Inneren der Tiefkühlzelle

COUVERCLES CARRES, CONVOYEURS ET CONTRE-SORBETIERES

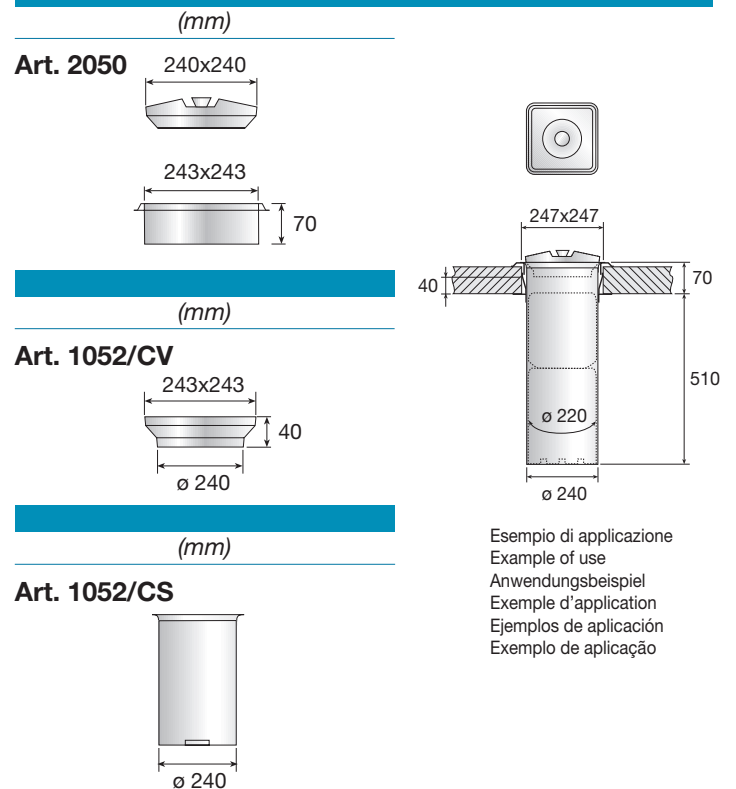
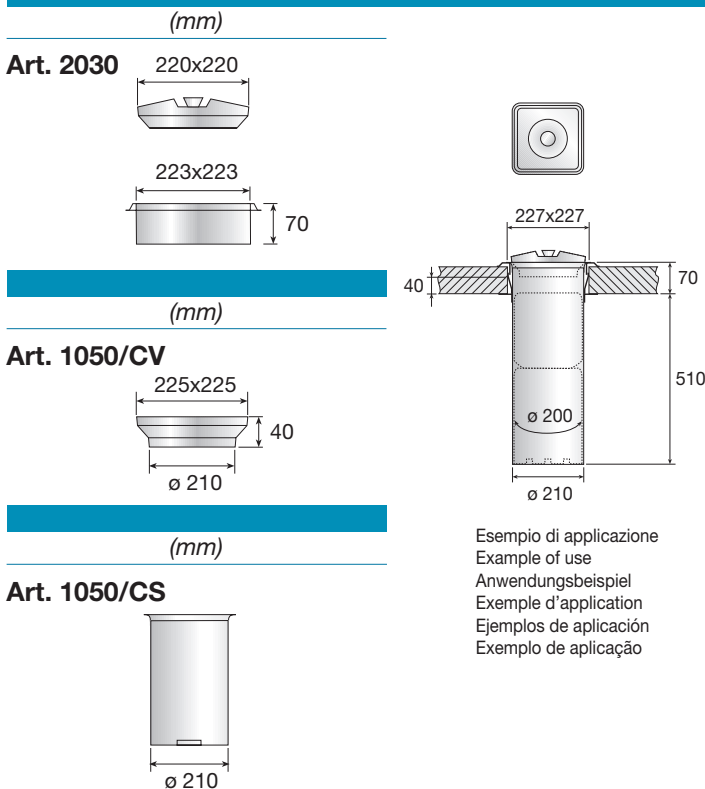
Une liaison fonctionnelle avec l'intérieur de la chambre froide

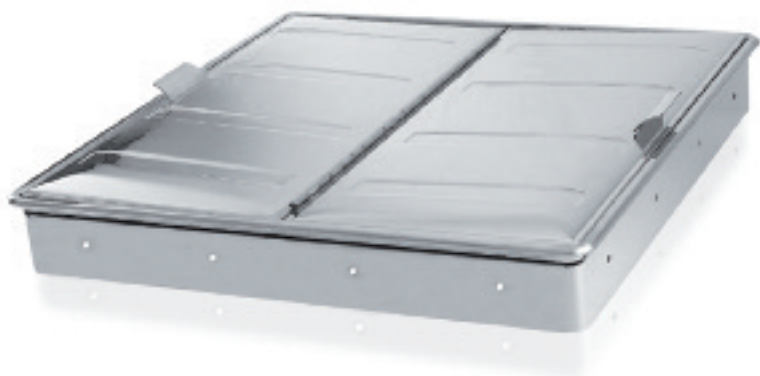
TAPAS CUADRADAS, CANALIZADORES Y CONTENEDORES PARA SORBETERAS

Un funcional empalme con el interior de la celda frigorifera

TAMPOS QUADRADOS, CANALIZADORES E CONTRASORVETERIAS

Uma funcional ligação com o interior da câmara frigorífica





**COPERCHI E CORNICI
 PER BANCO GELATERIA**

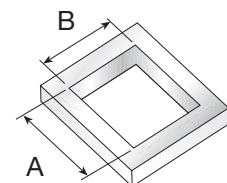
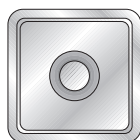
**LIDS AND FRAMES
 FOR ICE CREAM COUNTERS**

**DECKEL UND EINFASSUNGEN
 FÜR EISTHEKEN**

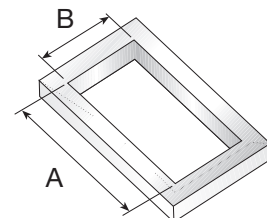
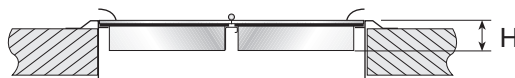
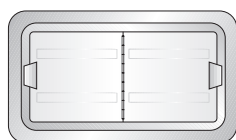
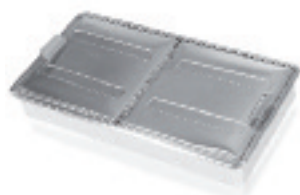
**COUVERCLES ET CADRES
 POUR COMPTOIR GLACIER**

**TAPAS CON MARCOS
 PARA MEUBLES REFRIGERADOS DE HELADERÍA**

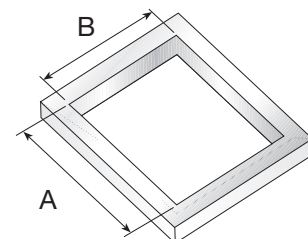
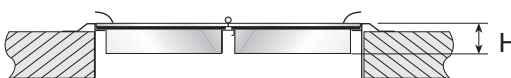
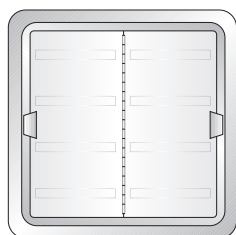
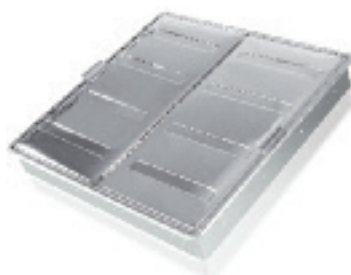
**TAMPOS E MOLDURAS
 PARA BALCÃO DE SORVETERIA**



| Art. | H (mm) | A (mm) | B (mm) |
|------|-----------|-----------|-----------|
| 2030 | 70 | 227 | 227 |
| 2050 | 70 | 247 | 247 |



| Art. | H (mm) | A (mm) | B (mm) |
|------|-----------|-----------|-----------|
| 2034 | 70 | 227 | 450 |
| 2054 | 70 | 247 | 490 |



| Art. | H (mm) | A (mm) | B (mm) |
|------|-----------|-----------|-----------|
| 2038 | 70 | 450 | 450 |
| 2058 | 70 | 490 | 490 |